



ENCORE

CONSTRUCTION	LOOP
PILE FIBER COMPOSITION	100% Nylon (Polyamide 6)
YARN TYPE	BCF
DYE METHOD	Solution Dyed
PILE WEIGHT	750 g/m <sup>2</sup>
NUMBER OF TUFTS	199080/m <sup>2</sup>
TUFTING GAUGE	1/12"
PRIMARY BACKING	Non-Woven
SECONDARY BACKING	<b>StableShield</b> - 100% Vinyl
OPTIONAL BACKING	<b>Recova</b> -PU Cushion, <b>EcoShield</b> -100% Recycled Vinyl
TILE SIZE	50 cm x 50 cm & 50 cm x 100 cm
PILE HEIGHT	3.0 mm / 5.0 mm
TOTAL PILE HEIGHT	7.5 mm
PILE TREATMENT	INVISTA Anti-Soil Treatment, Anti-Microbial (Optional)
RECOMMENDED INSTALLATION	Quarter Turn or Brick: <b>Tile</b> Brick, Basket, Half Basket, Herringbone: <b>Plank</b>

# SPECIFICATIONS

# COLOURLINE



ENCORE - 725



ENCORE - 742



ENCORE - 744



ENCORE - 748



ENCORE - 758



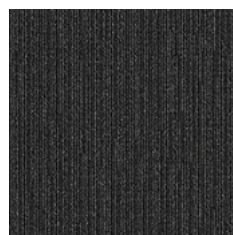
ENCORE - 761



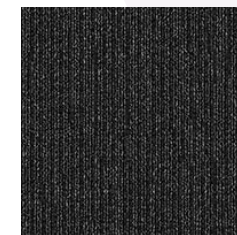
ENCORE - 766



ENCORE - 770



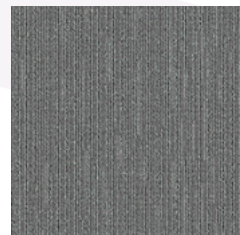
ENCORE - 771



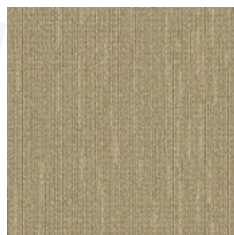
ENCORE - 776



ENCORE - 778



ENCORE - 775



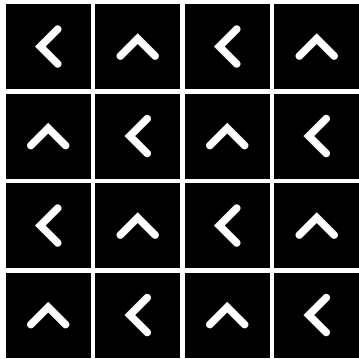
ENCORE - 791



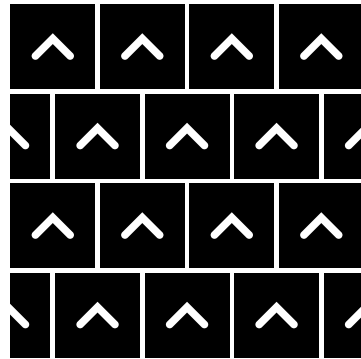


# HOW TO INSTALL

**QUARTER TURN**



**BRICK**





Standard  
*CARPETS*

[www.standardcarpets.com](http://www.standardcarpets.com)